

● **JR Line**

1-minute walk from Yurakucho Station
 5-minute walk from Tokyo Station
 (connected by B1 concourse
 with Keiyo Line at Tokyo Station)

● **By Shuto Expressway**

Harumi-Dori Ave from Kasumigaseki Exit
 Hibiya-Dori Ave from Kandabashi Exit
 Kajibashi-Dori Ave from Takaracho Exit
 Kajibashi-Dori Ave from Kyobashi Exit

● **Subway**

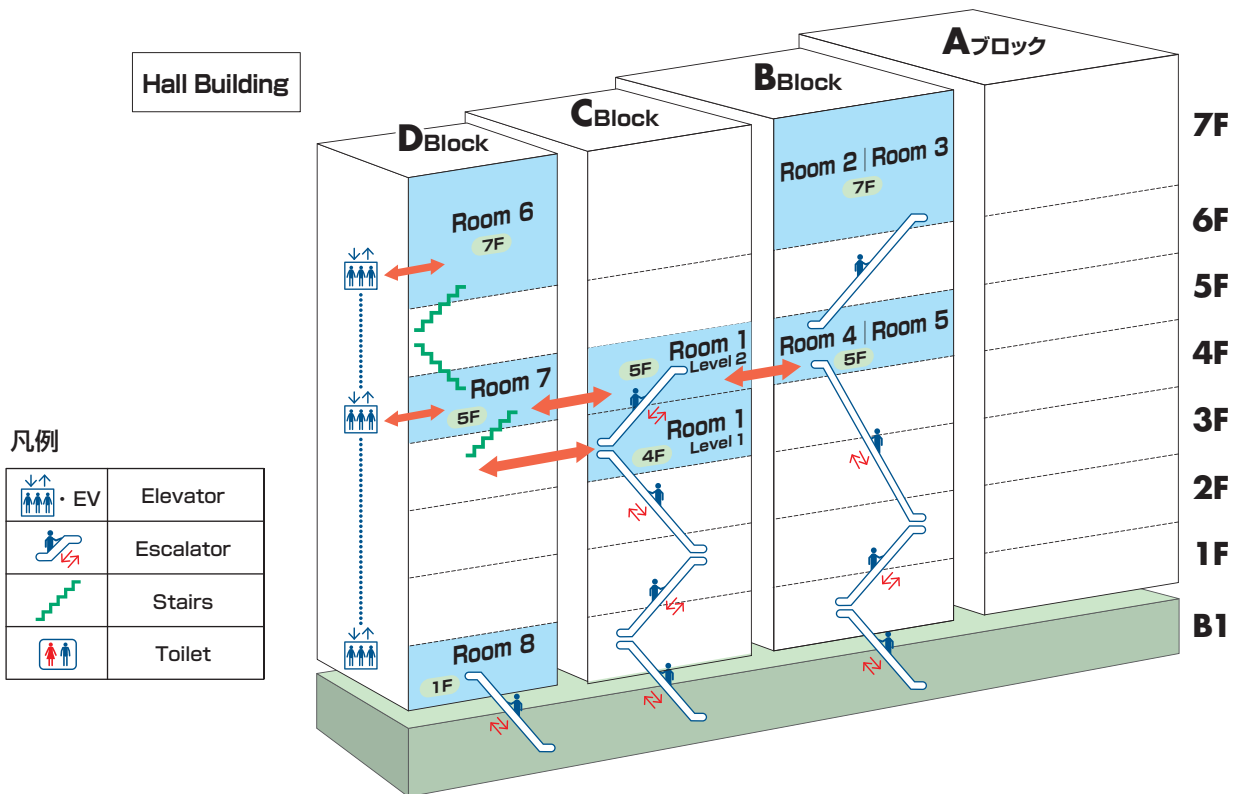
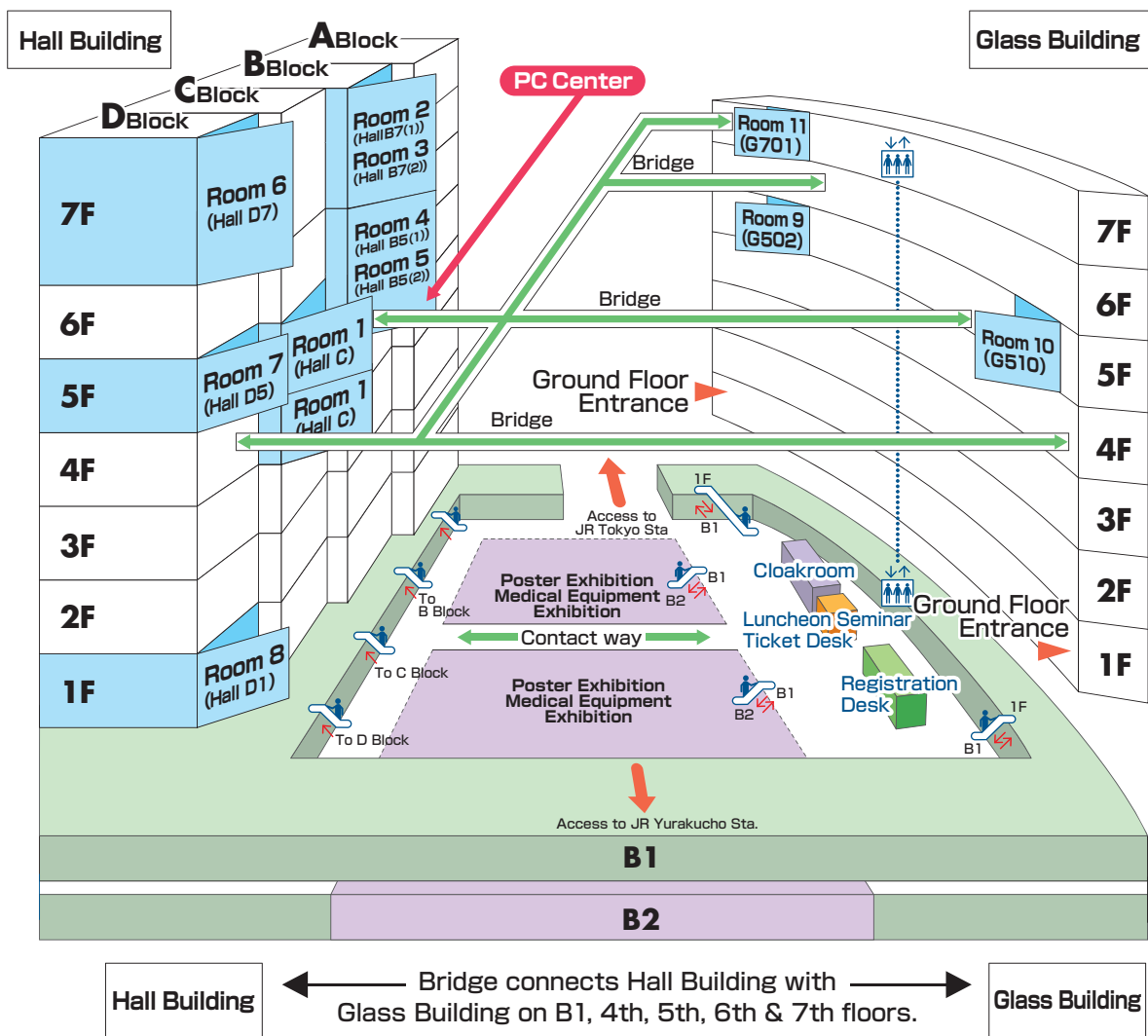
Yurakucho Line	Connected to Yurakucho Station through underground concourse [Exit D5]
Hibiya Line	5 min walk from Hibiya Sta 5 min walk from Ginza Sta
Chiyoda Line	5 min walk from Nijubashimae Sta 7 min walk from Hibiya Sta
Marunouchi Line	5 min walk from Ginza Sta
Ginza Line	7 min walk from Ginza Sta 7 min walk from Kyobashi Sta
Mita Line	5 min walk from Hibiya Sta

● **From New Tokyo International Airport, Narita**

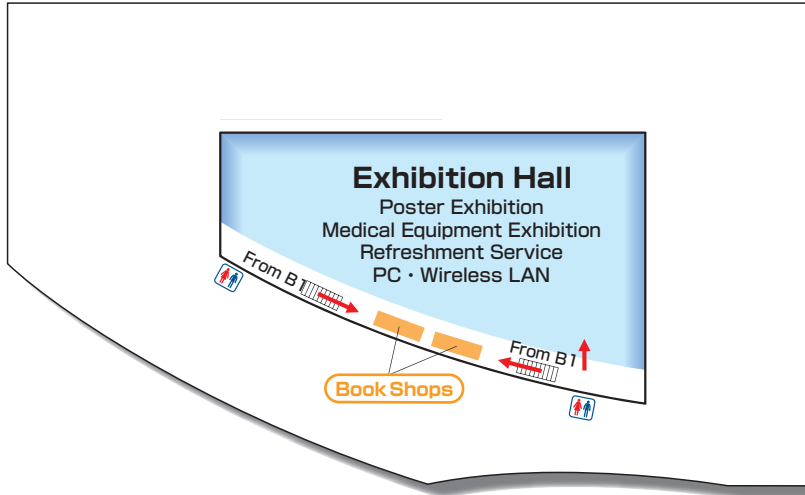
80 to 90 minutes to Tokyo Station by Limousine Bus
 53 minutes to Tokyo Station by JR Narita Express

● **From Haneda Airport**

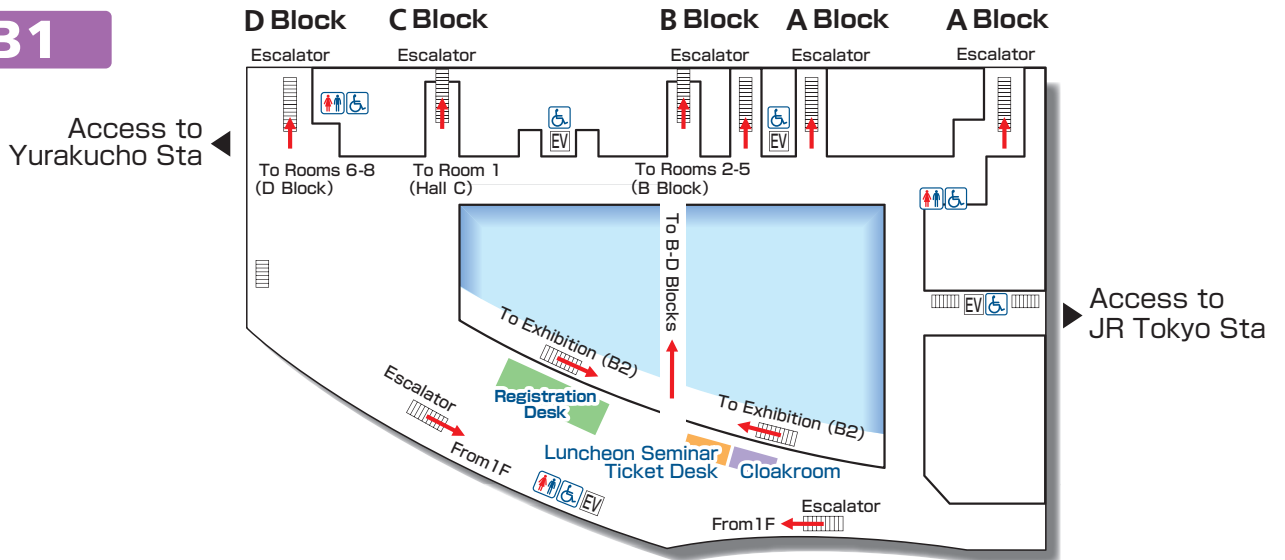
23 minutes to Hamamatsucho Station by Monorail
 4 minutes from JR Hamamatsucho Station to Yurakucho Station



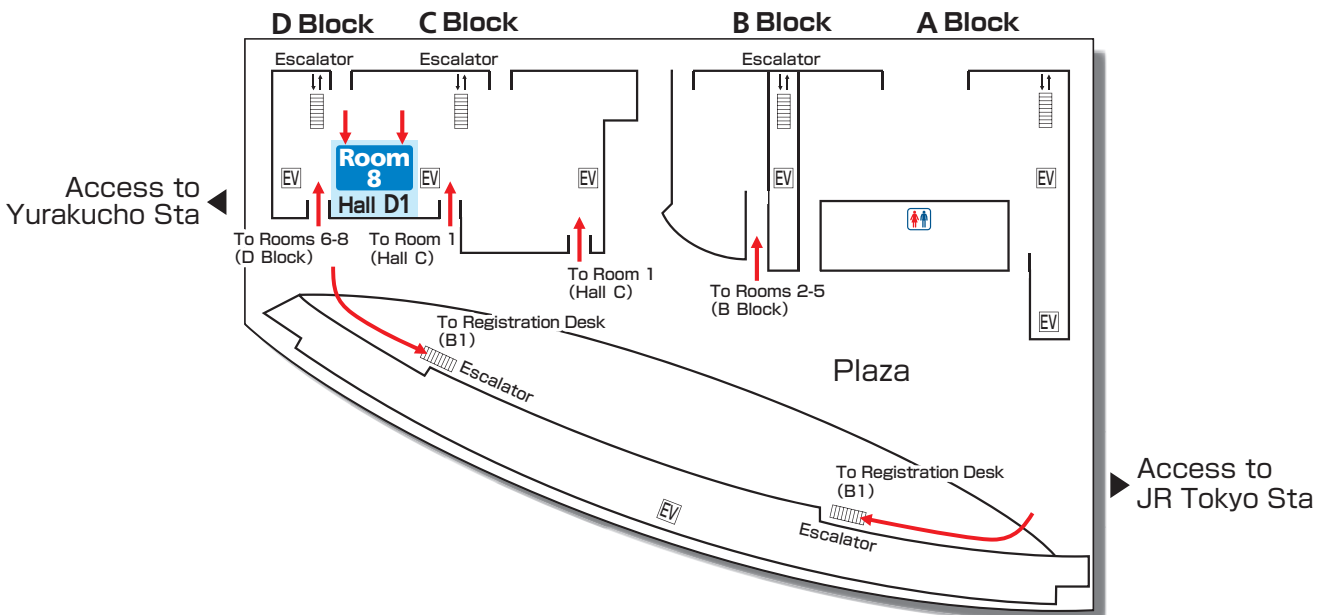
B2



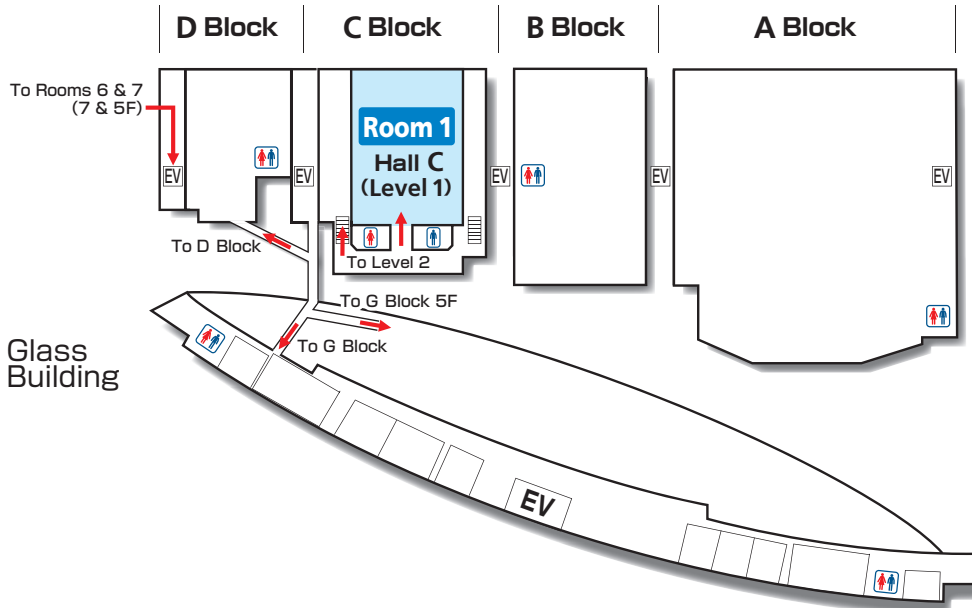
B1



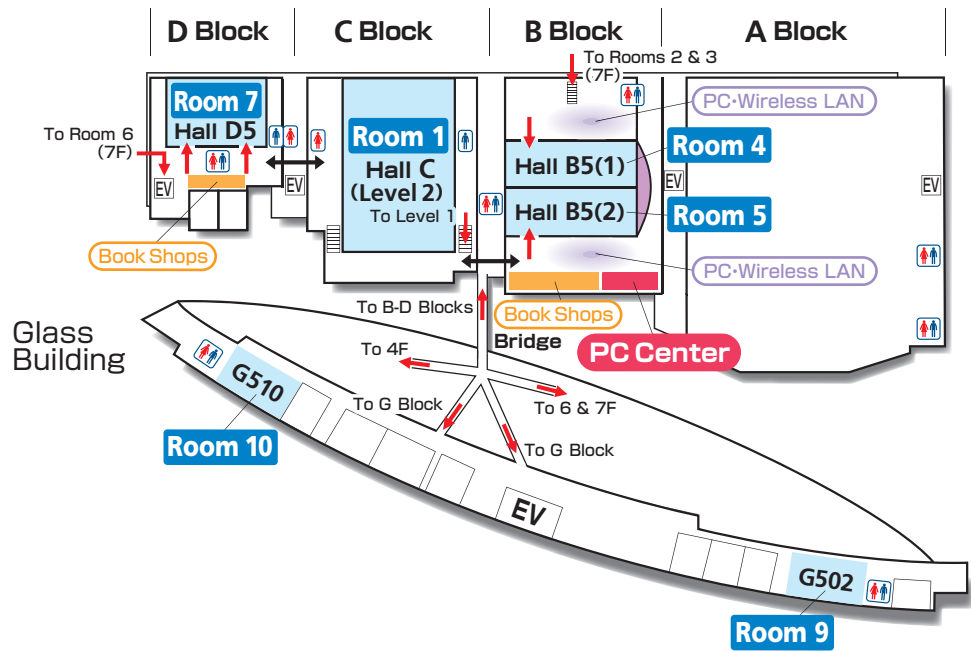
1F



4F



5F



7F

